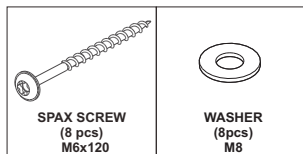
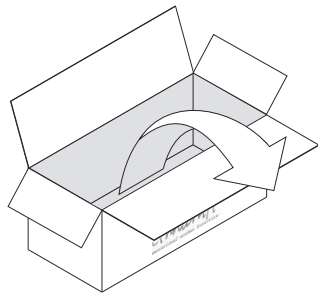
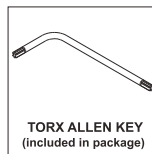


BOK OFFICE DESK - WITH POWER OUTLET ASSEMBLY INSTRUCTION FOR OFFICE DESK INSTALLATION

HARDWARE ENCLOSED



TOOL

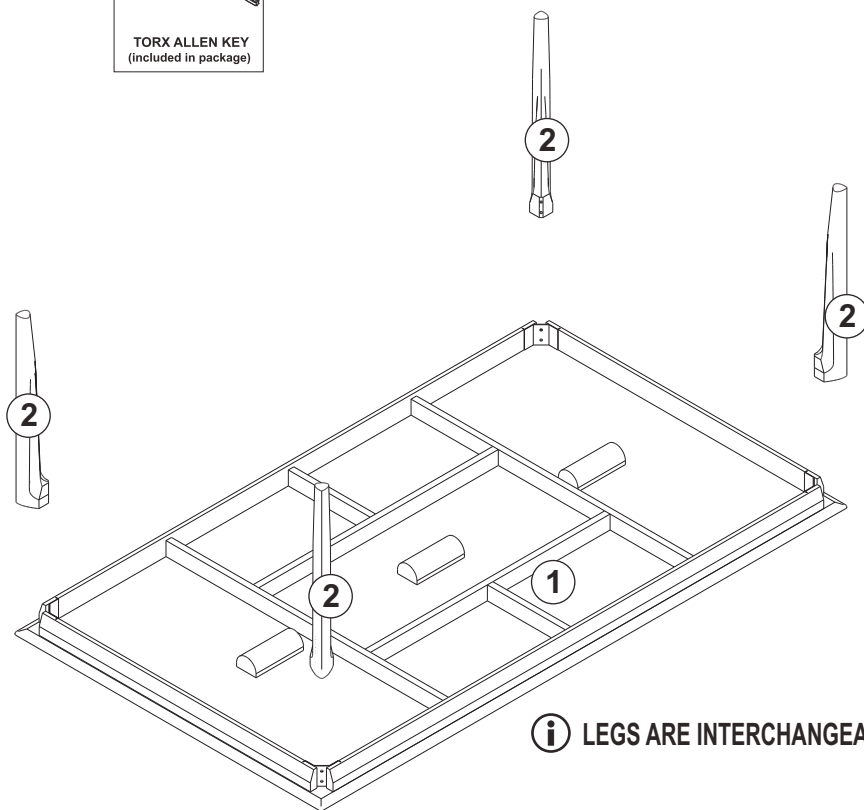


IN YOUR PACKAGE :

ASSEMBLY INSTRUCTION
HARDWARE (AS LISTED ABOVE)

PARTS TO BE INSTALLED

1. TABLE TOP 1pc
2. LEGS 4pcs

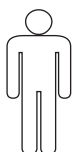


i LEGS ARE INTERCHANGEABLE

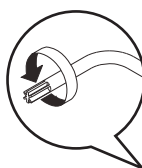
SYMBOLS



DIRECTION

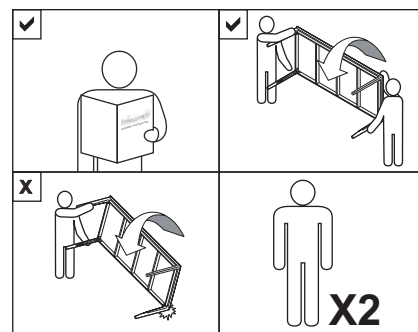


NUMBER OF
PERSONS NEEDED

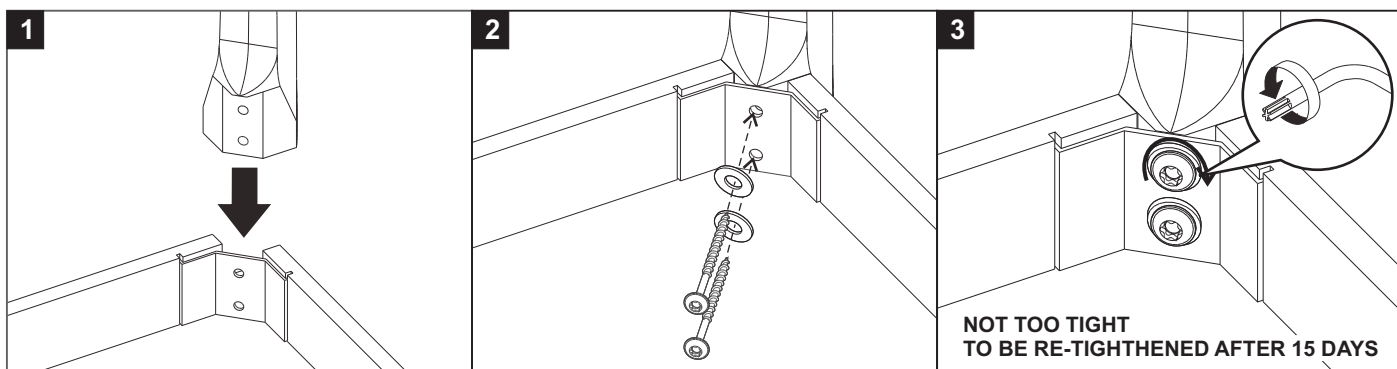


USE TORX ALLEN KEY
TO TIGHTEN

NOTICE



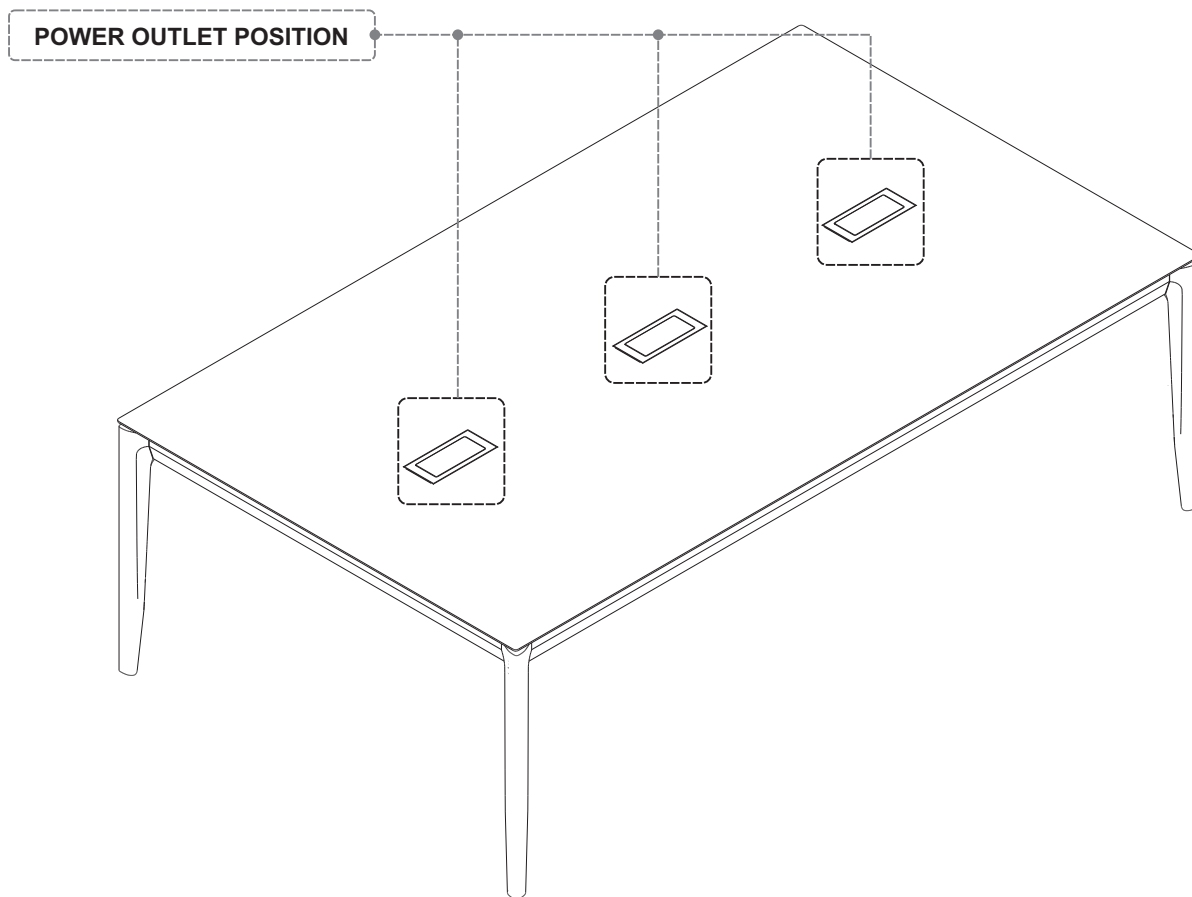
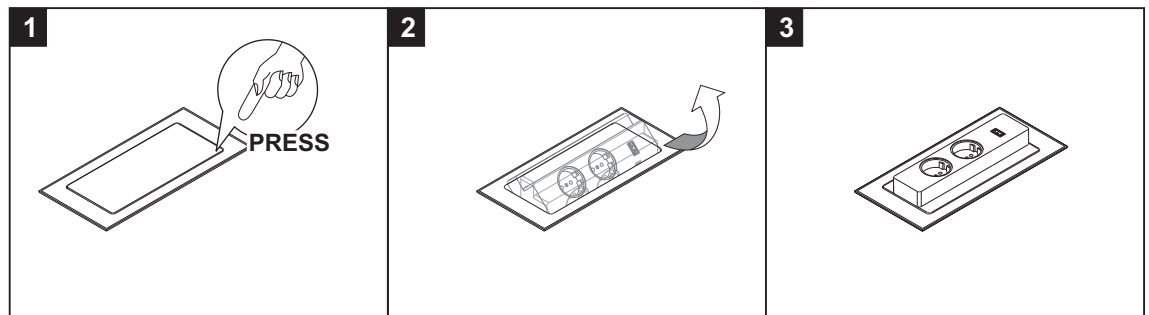
CONNECTING THE LEGS AND THE TABLE TOP



REPEAT STEP 1 TO STEP 3 FOR OTHER LEGS

BOK OFFICE DESK - WITH POWER OUTLET ASSEMBLY INSTRUCTION FOR OFFICE DESK INSTALLATION

OPEN POWER OUTLET



CLOSE POWER OUTLET

